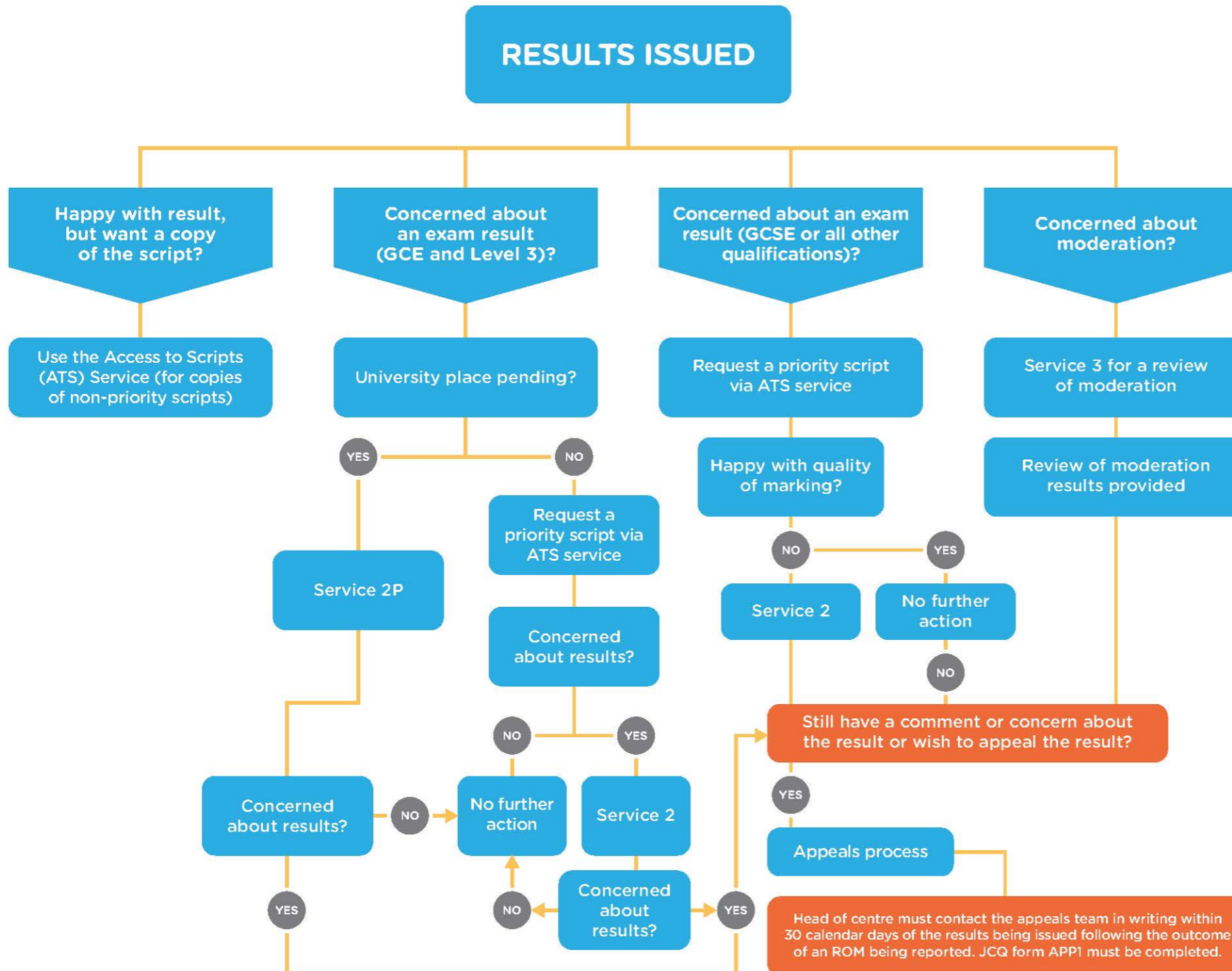


# WJEC POST RESULTS SERVICES

Following the publication of results for each examination series, WJEC offers a range of post-results services relating to Review of Marking (ROM) and access to examination scripts.

Here's a quick guide to help you select the right service:



## OUR SERVICES EXPLAINED

### ROM Service 1 (clerical re-check)

A re-check of all clerical procedures leading to the issue of a result.

### ROM Service 2 (includes clerical re-check)

#### Post-results review of marking

A review of the original marking to ensure that the agreed mark scheme has been applied correctly.

### ROM Service 2P (includes clerical re-check)

#### Post-results priority review of marking (GCE and Level 3 only)

A priority review of the original marking to ensure that the agreed mark scheme has been applied correctly.

### ROM Service 3

#### Post-results review of Moderation (not available for individual candidates)

A review of the original moderation to ensure adjusted marks have been applied consistently with the agreed mark scheme.

### Access To Script (ATS)

#### Priority scripts requested prior to an ROM

Non priority for teaching and learning purposes returned after ROM deadline.